



L T L B *envirostructure* ■
 238 E. Bailey, Unit L ■
 Naperville, IL 60565 ■
 P 630.728.0435 ■
 F 630.364.5761 ■
 www.LTLBenv.com ■

LEED for Homes LL 3, LL4, LL5, & LL6

The information contained within this document is meant for a specific project that has been contracted with LTLB*envirostructure* and for no other purpose. Utilization of the information outside of the contracted specific project constitutes a violation of conditional use.

DISCLAIMER / CONDITIONAL USE

This document is provided as a tool for a specific project that has been contracted with LTLB*envirostructure*. Distribution may be made only to project participants of the specific contracted project. Use of this document outside of the contracted relationship with LTLB*envirostructure* without its permission constitutes a violation of copyright law. Use of this document also constitutes acceptance of the terms of conditional use.

Copyright © 2013 LTLB*envirostructure*

LL – LOCATIONS & LINKAGES

LL 3.1 - Edge Development / LL 3.2 - Infill

USGBC Required Submittals

Calculation of development area along site perimeter

LL 3.3 - Previously Developed

USGBC Required Submittals

Historical documents, maps, or comparable evidence of previous development.

LL 4 - Existing Infrastructure

USGBC Required Submittals

Maps or comparable evidence of water and sewer infrastructure within ½ mile of the home.

Although USGBC may indicate the above credits would have submittals necessary for documentation, it is up to the individual green rater to make the determination. Typically LL3 and LL4 credits can be visually verified.

LL 5 - Community Resources

USGBC Required Submittals

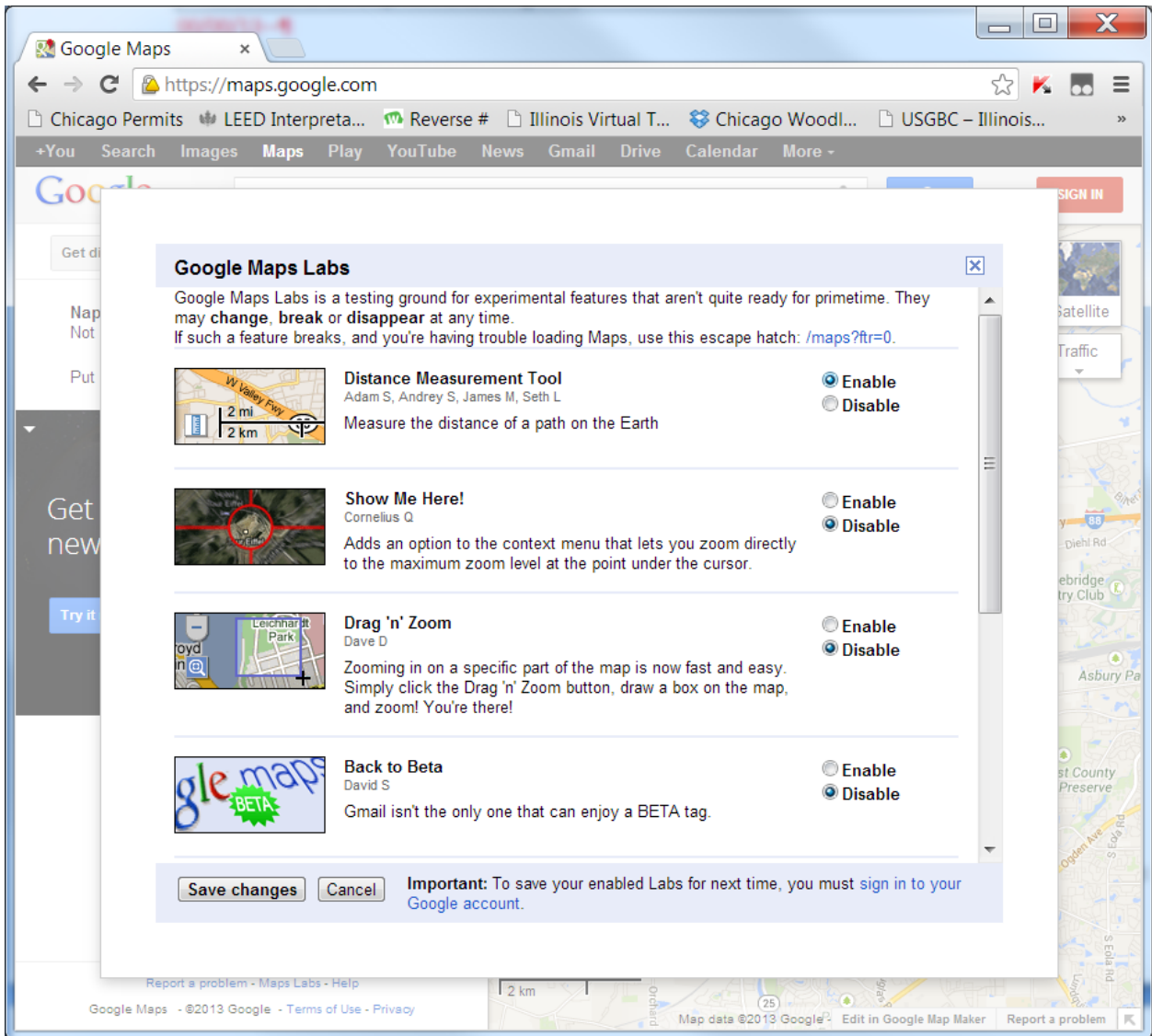
Lists or maps of community resources within ¼ mile or ½ mile walking distance of the home. OR
 Transit schedules and calculations of transit rides.

Tools:

<http://www.walkscore.com/> - good for getting an idea of resources nearby

<https://maps.google.com/> - good for documentation coupled with screen shots





LL 6 - Access to Open Space

USGBC Required Submittals

Maps and calculations of publicly accessible open space of at least $\frac{3}{4}$ acre within $\frac{1}{2}$ mile of the home.

Project teams will typically use the same tools for LL6 that were used for LL5.

Copyright © 2013 LTLBenvirotecture